

White Spruce Wind Energy Project

Community Engagement Session Report

February 21st, 2025

Table of Contents

1 Introduction	1
2 Summary of Public Engagement	1
2.1 PUBLIC ENGAGEMENT	1
2.2 ENVIRONMENTAL IMPACT ASSESSMENT	1
2.3 COMMUNITY ENGAGEMENT SESSION SUMMARY	2
2.4 NOTICES OF COMMUNITY ENGAGEMENT SESSION.....	6
2.5 COMMUNITY ENGAGEMENT SESSION FORMAT	6
2.6 PUBLIC COMMUNITY MEETING PRESENTATION MATERIALS	7
2.7 PUBLIC COMMENTS AND CONCERNS	7
2.8 FUTURE PUBLIC ENGAGEMENT	8
2.9 ADDITIONAL PUBLIC ENGAGEMENT	8
3 Future Engagement Activities	8
4 Important Contact Information	8
Appendix A Community Engagement Session Letter Notices	9
Appendix B Community Engagement Session Newspaper Notices	10
Appendix C Community Engagement Session Website/Social media Notice	11
Appendix E Poster Boards	16
Appendix F Additional presentation Materials	24
Appendix G Public Comments	26
Appendix H Facebook Comments	34

1 INTRODUCTION

The proposed White Spruce Wind Energy Project (the Project) is a 49-megawatt (MW) wind energy project located on Crown land south of the Village of Fredericton Junction, in Charlotte County, New Brunswick. The Project will include up to three wind turbine generators (WTGs), which will be interconnected to the existing New Brunswick Power Corporation (NB Power) electrical transmission network.

If the Project receives all relevant utility and regulatory approvals, major construction will commence in June of 2026. Construction is anticipated to require approximately eighteen months. If the Project proceeds, it will commence commercial operation by the end of 2027, with an expected operational lifespan of at least 25 years. The Project will be required to meet provincial requirements for decommissioning at the end of its lifecycle should its generation agreement term not be extended.

SWEB and its First Nation partners (collectively, the Proponent) are committed to involving the public during every stage of development and have engaged with various stakeholders through in-person meetings, letters, and a community engagement session. The following report summarizes all public engagement activities conducted by the Proponent and outlines how the Proponent will continue to engage the public throughout the Project's lifecycle.

2 SUMMARY OF PUBLIC ENGAGEMENT

The public engagement process corresponds with the project development timeline, which commenced in 2021. The Proponent has directly engaged local community members, municipal leaders, and other key stakeholders regarding the Project's development. The following sections summarize the Proponent's engagement efforts with each stakeholder group.

2.1 PUBLIC ENGAGEMENT

Since the Project is located in a remote area on Crown land, there are no residential properties in the vicinity of the Project site. However, the Proponent has engaged residents and essential stakeholders in the surrounding area of Fredericton Junction to provide information about the Project and to discuss potential concerns relating to the Project.

2.2 ENVIRONMENTAL IMPACT ASSESSMENT

Fieldwork for the Project has been progressed and is near completion, and the results will be shared in Q1 of 2025. In the meantime, the Proponent presented information at the public engagement session detailed in Section 2.3 (below) to explain the Environmental Impact Assessment (EIA) process, detailing who is responsible for the evaluation and how the evaluation process works.

2.3 COMMUNITY ENGAGEMENT SESSION SUMMARY

To engage with the broader population near the Project site, a community engagement session was held on November 19th, 2024, at the Royal Canadian Legion Branch 55 (159 Sunbury Dr, Fredericton Junction, NB E0G 1T0) from 5:00 PM to 8:00 PM Atlantic Standard Time (AST). The Legion was selected as the meeting venue because of its central location in the community, large interior meeting space, and availability of parking. The Proponent received questions and comments from participants at the community engagement session and engaged the participants in discussions about the proposed Project. A feedback form was provided to all participants to provide additional thoughts or concerns, and these concerns were reviewed in the interest of incorporating public feedback into the Project's development.

Twenty visitors attended the meeting. Many participants expressed interest in assisting with creating opportunities for local businesses to benefit from the Project's development, construction, and operation. Overall, the feedback received from the community indicated that there was positive support for wind energy and acknowledged its importance and inclusion in the transition to generating more electricity from renewable energy sources. The comments, concerns and questions from the meeting attendees are listed in Table 2 in Section 2.7 (below). The figures below illustrate the layout of the community engagement session.









2.4 NOTICES OF COMMUNITY ENGAGEMENT SESSION

The community engagement session notice (see Appendix A) was distributed to residents throughout the area and near the vicinity of the proposed project site and was also advertised on noticeboards within local buildings. Notices were published in the *Daily Gleaner*, a newspaper with local distribution, approximately one week prior to the community engagement session (see Appendix B) and on the Project's website (see Appendix C). In addition, the notice was posted on the SWEB Development Facebook page and paid advertisements were targeted for the area of Deersdale. The notice was also posted on the Proponent's LinkedIn page (see Appendix C).

2.5 COMMUNITY ENGAGEMENT SESSION FORMAT

Community Engagement Session participants were greeted by SWEB Development staff members and asked to provide their contact information on a sign-in sheet that was provided at the venue's entrance (see Appendix D). Staff members were wearing clothing branded with the company logo for the participants.

Staff were available to interpret Project information and answer any questions.

The table below lists company representatives at the Community Engagement Session.

Table 1: SWEB Development Representatives at the White Spruce Wind Energy Project Community Engagement Session

Name	Role, Affiliation
Jason Parisé	Director of Development – Wind Lead, SWEB Development
Sarah Rosenblat	Director of Development – Solar Lead, SWEB Development
Jack Dawson	Junior Project Developer, SWEB Development
Mir Sultan	Junior Project Developer, SWEB Development
Sam Cheshire	Project Developer, SWEB Development
Khaled Abdul	Electrical Engineer, SWEB Development
Evan De Silva	Junior Project Developer, SWEB Development
Elias Bauer	International Trainee, SWEB Development

Coralee Lewis	Stakeholder & Communications Manager, SWEB Development
---------------	---

2.6 PUBLIC COMMUNITY MEETING PRESENTATION MATERIALS

The materials presented at the community engagement session included eight poster boards, as well as a project one-pager.

The community engagement session presentation materials included:

- Eight poster boards (See Appendix E), which illustrate key topics surrounding the Project were set up in a semi-circular arrangement throughout the recreation center.
- A project one-pager (See Appendix F), which summarizes all the project details, was handed out to session attendees upon arrival

2.7 PUBLIC COMMENTS AND CONCERNS

The Proponent received questions and feedback throughout the community engagement session. Table 2 (below) provides a summary of the most common questions and concerns raised by the public during the meeting, along with the Proponent's responses and additional information that the public can obtain regarding these concerns.

Table 2: Comments and questions received from the public and responses from SWEB Development

Comment or Question	Response/Potential Amendments to Project
What is the timeline of this Project?	This project is in advanced development. It was bid into the New Brunswick Request for Expressions of Interest (NB REOI) and is currently awaiting results from the EIA.
Is this the first meeting for the Project?	This is the first community engagement session for the White Spruce Wind Energy Project. Additional Community Engagement Sessions will be held for the Project after the release of the EIA. The Proponent will continue to engage all stakeholders as questions or concerns arise, either via e-mail, telephone or through in-person meetings.
How many turbines will be commissioned and where?	The Project is expected to have up to seven 7 MW WTGs for a total installed capacity of up to 49 MW.
Will noise impacts affect camp owners near the project area?	Based on baseline sound levels collected at several locations near the Project site in conjunction with initial noise modelling, the Proponent does not anticipate that there will be any adverse impacts from noise levels.
Will there be employment opportunities for local businesses and contractors?	The Proponent anticipates that several opportunities will emanate from the proposed Project. It is anticipated that civil works, site guards, and other services will be required for the project and the Proponent intends to procure this locally.

2.8 FUTURE PUBLIC ENGAGEMENT

The Proponent will continue to document concerns raised by the public through telephone, social media, e-mail correspondence, and any additional contact. By keeping a database of public comments, the Proponent will be better poised to design a Project that is sensitive to concerns while also balancing these concerns with the feasibility of the project. When possible, the Proponent will directly engage with members of the public who have expressed concerns relating to the Project. In addition, the Proponent will reach out to community members who have expressed an interest in supporting the project. The Proponent will conduct additional Community Engagement Sessions in the future.

2.9 ADDITIONAL PUBLIC ENGAGEMENT

Throughout the development of the Project, the Proponent has identified additional community stakeholders that must be engaged regarding the Project given their personal or recreational use of areas near or within the Project area. As such, the Proponent has engaged other stakeholders with land use interests that are proximal or overlap with the Project site and will continue to work to address any concerns brought forth by these stakeholders.

3 FUTURE ENGAGEMENT ACTIVITIES

Beyond the additional Community Engagement Sessions held for the Project, the Proponent intends to continue its engagement with residents, municipal councils, and provincial leaders. The Proponent encourages all stakeholders to contact the Project team should any additional questions or concerns arise.

4 IMPORTANT CONTACT INFORMATION

Jason Parisé

Director of Development – Wind Lead

SWEB Development LP

6080 Young St

Halifax, Nova Scotia, B3K 5L2

902-431-0564 ext. 261

<https://www.sweb.energy/ca-en/projectpages/white-spruce>

APPENDIX A

COMMUNITY ENGAGEMENT SESSION LETTER NOTICES



COMMUNITY ENGAGEMENT SESSION

Proposed White Spruce Wind Energy Project

SWEB Development (SWEB) hosts a community engagement session regarding the proposed White Spruce Wind Energy Project. This is a proposed seven (7) wind turbine generator project that if built, will be located south of Fredericton Junction, NB. This engagement session will allow stakeholders to meet SWEB's development team, learn about the project's benefits, ask questions, and provide feedback to shape the proposed project.

Project website: whitespruce.sweb.energy

SWEB Development
a W.E.B. company
sweb.energy

W.E.B.

**WHEN: TUESDAY
NOVEMBER 19, 2024**

**TIME: 5:00 PM –
8:00 PM**

**WHERE: ROYAL
CANADIAN LEGION
BRANCH 55**

**ADDRESS:
159 SUNBURY DR,
FREDERICTON
JUNCTION, NB**


**CONTACT INFO:
902 329 1494
WHITESPRUCE@WEB.ENERGY**

SWEB DEVELOPMENT

6080 Young Street, Suite 403
Halifax, NS
B3K 5L2

APPENDIX B

COMMUNITY ENGAGEMENT SESSION NEWSPAPER NOTICES



**WHEN: TUESDAY
NOVEMBER 19, 2024**

**TIME: 5:00 PM –
8:00 PM**

**WHERE: ROYAL
CANADIAN LEGION
BRANCH 55**

**ADDRESS: 159
SUNBURY DR,
FREDERICTON
JUNCTION, NB**

**CONTACT INFO:
902 329 1494
WHITESPRUCE@SWEB.ENERGY**

COMMUNITY ENGAGEMENT SESSION

Proposed White Spruce Wind Energy Project

SWEB Development (SWEB) is hosting a community engagement session regarding the proposed White Spruce Wind Energy Project. This is a proposed **seven** wind turbine generator project that if built, will be located south of Fredericton Junction, NB. This engagement session will allow stakeholders to meet SWEB's development team, learn about the project's benefits, ask questions, and provide feedback to shape the proposed project.


Project website: whitespruce.sweb.energy

SWEB Development
a W.E.B. company
W.E.B.

SWEB DEVELOPMENT
6080 Young Street, Suite 403
Halifax, NS B3K 5L2

APPENDIX C

COMMUNITY ENGAGEMENT SESSION WEBSITE/SOCIAL MEDIA NOTICE



SWEB Development
a WEB company
webenergy

WHITE SPRUCE
WIND ENERGY PROJECT

[The Project](#)[The Project Partners](#)[Environment](#)[About Wind](#)[Events & News](#)[Contact](#)

Community Engagement Session

SWEB Development (SWEB) hosts a community engagement session regarding the proposed White Spruce Wind Energy Project.

11/2024 - [Back to overview](#)

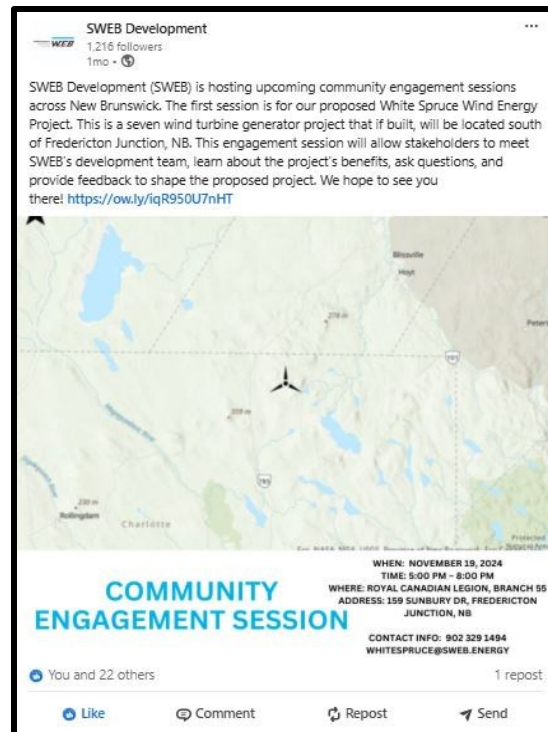
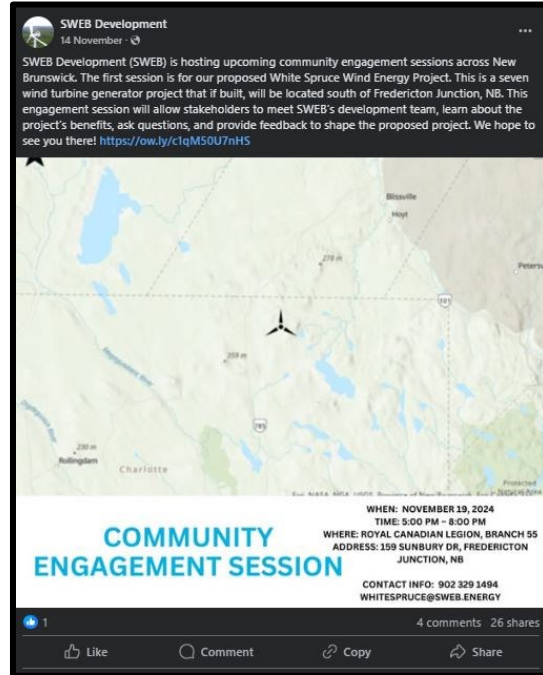
This is a proposed seven wind turbine generator project that if built, will be located south of Fredericton Junction, NB. This engagement session will allow stakeholders to meet SWEB's development team, learn about the project's benefits, ask questions, and provide feedback to shape the proposed project.

When: Tuesday, November 19, 2024

Time: 5:00 PM - 8:00 PM

Where: Royal Canadian Legion Branch 55 - 159 Sunbury Drive, Fredericton Junction, NB

Contact Information: 902 329 1494



APPENDIX D
PUBLIC OPEN HOUSE SIGN-IN SHEET



November 19th, 2024, 5:00 – 8:00 PM

White Spruce Wind Energy Project Community Engagement Session – Royal Canadian Legion Branch 55

Sign-in Sheet - Attendees

Name	Address	Phone #	Email
1. Margaret Harris	206 Gore Rd.	368-7863	
Wayne Mason	39 Prides Landing	348-0120	
Pam Easton	Winnipeg	261-8995	
Tony Mason	Farm 5CT	368-7847	
Jeff Carr	910 Broad Road	478-7494	



November 19th, 2024, 5:00 – 8:00 PM

White Spruce Wind Energy Project Community Engagement Session – Royal Canadian Legion Branch 55

Sign-in Sheet - Attendees

Name	Address	Phone #	Email
<u>Raymond</u>	<u>54 Willow Tree</u>	<u></u>	<u>uncle345@live.ca</u>
<u>Mike Courten</u>	<u>8 Hwy St.</u>	<u></u>	<u>mikecourten@yahoo.ca</u>
<u></u>	<u></u>	<u></u>	<u></u>
<u></u>	<u></u>	<u></u>	<u></u>
<u></u>	<u></u>	<u></u>	<u></u>
<u></u>	<u></u>	<u></u>	<u></u>
<u></u>	<u></u>	<u></u>	<u></u>
<u></u>	<u></u>	<u></u>	<u></u>
<u></u>	<u></u>	<u></u>	<u></u>



November 19th, 2024, 5:00 – 8:00 PM

White Spruce Wind Energy Project Community Engagement Session – Royal Canadian Legion Branch 55

Sign-in Sheet - Attendees

Name	Address	Phone #	Email
James Young	Ft. St. John	506 261 6290	wjamesyoung@gmail.com
Lucas McShaffery	Fredericton	506-429-8456	lucas.mcshaffery@tri-wireline.com
Jasmin Kharvira	Fredericton	506-429-3468	Jasmin-Kharvira@GreyStoneUtility.com
DAVID McDONALD	NASAWOOD		
Don Conea	SI	506-381-9572	
John Richardson		355-6501	
Jim	John	470-1467	
Tulio Valentin	425-1009 Regent St Fredericton	506 897 2247	tulio.valentin@hatch.com
Eric Ouellette	Grand Falls	506 473 0298	eric.ouellet@semtec.ca

APPENDIX E
POSTER BOARDS



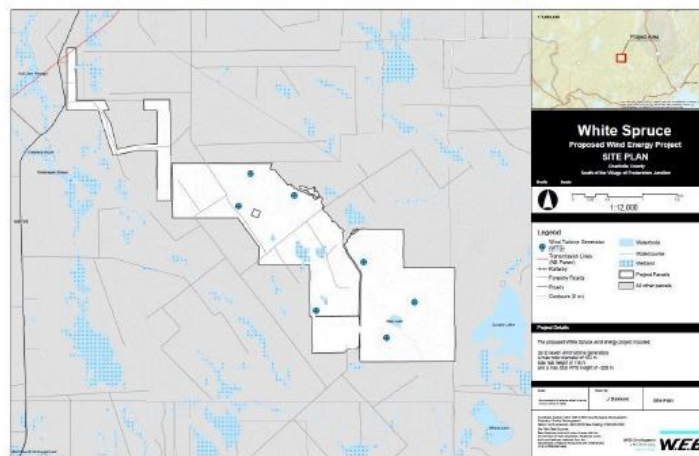
Thank you for attending our

Community Engagement Session

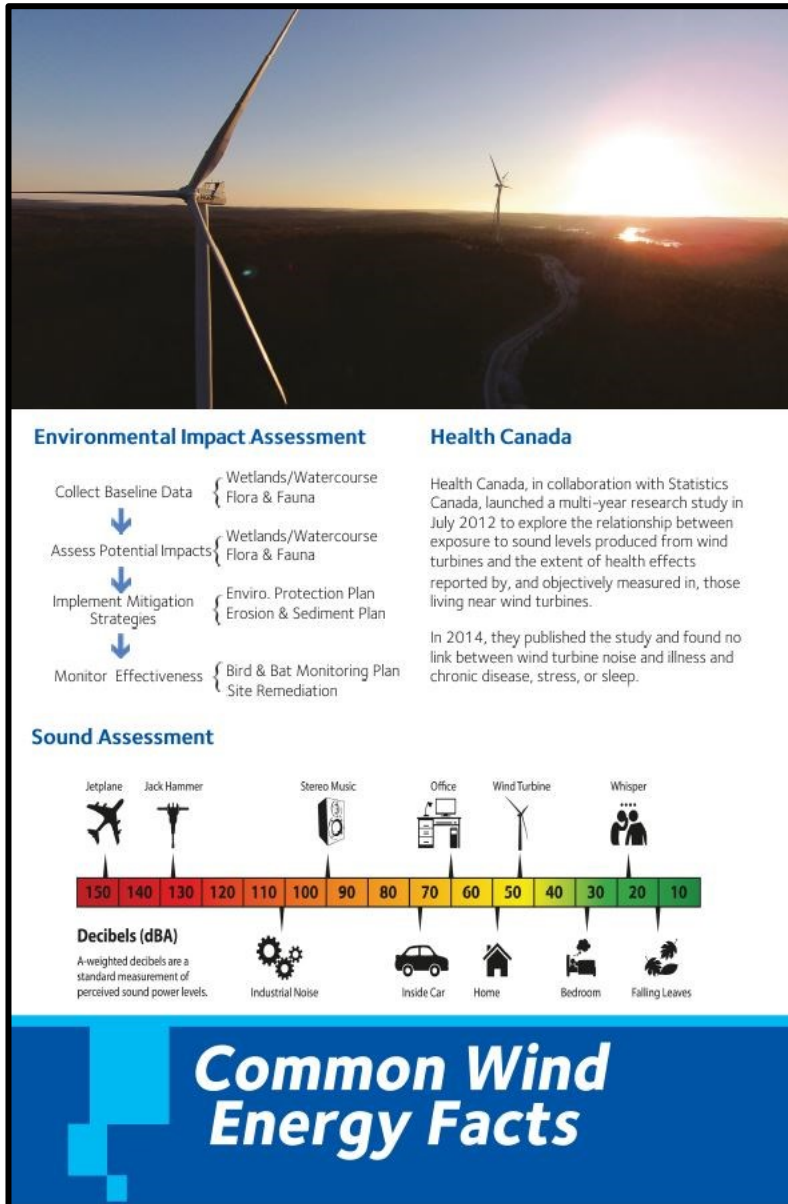
This is part of the public engagement process to inform residents of the status of the

White Spruce Wind Energy Project

Welcome
Bienvenue



Proposed Project Area

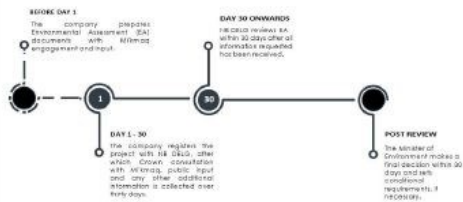




New Brunswick Environmental Impact Assessment (EIA) Process

- Is required by the New Brunswick Department of Environment and Local Government (DELG) to ensure that a Project's environmental effects are minimized.
- Identifies and evaluates environmental effects at an early stage in Project development and recommends mitigation to reduce adverse impacts.
- Public consultation is an integral part of this process. The community is invited to comment on the environmental assessment during the review period.
- Reviewed by NB DELG and other relevant government agencies.
- The New Brunswick Minister of the Environment may issue approval once satisfied that environmental effects have been adequately assessed and addressed.
- Fieldwork for this project has been completed, and results will be disclosed in Q1 2025

TYPICAL BASELINE STUDIES



Source: Government of New Brunswick EIA Website

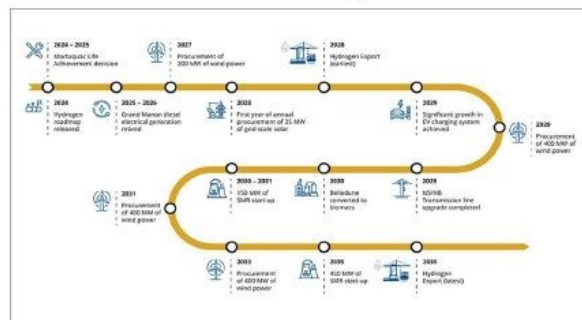
EIA Process



New Brunswick Request for Expressions of Interest

In late 2023, the Government of New Brunswick released its proposed path forward for the New Brunswick Energy System via its updated energy plan, namely, Powering Our Economy and the World With Clean Energy. As part of this energy transition and energy transition roadmap (see below), NB Power released a Request for Expressions of Interest (REOI-XXXX-23-126) to initiate the procurement of new renewable energy projects. The REOI was aimed at procuring up to 200 MW of wind energy, 15 MW of solar photovoltaic projects, and 5 MW of tidal power projects. This procurement and others aim to increase the inclusion of First Nations and Indigenous communities in the energy transition, while also working to lower energy rates for ratepayers in the province. Additional benefits anticipated to be generated from these procurements are the creation of new jobs, business opportunities, and expertise in the energy industry here in New Brunswick. SWEB and its partners have submitted this project in response to the REOI and intend to continue to submit project proposals as part of future renewable energy procurements held in the province.

New Brunswick's 2035 Clean Energy Goals Timeline



Derived from Powering Our Economy and the World With Clean Energy - Our Path Forward to 2035, Government of New Brunswick.

New Brunswick REOI





Project Proponent

The Proponent for this project will be established through a partnership between SWEB Development LP (SWEB Energy) and one or more local First Nation communities. More details regarding this partnership will be made available via the project website in early 2025.



SWEB Energy is a North American subsidiary of W.E.B. Group, a community-owned renewable energy developer and operator headquartered in Austria. The group develops, constructs, and operates wind, solar, and small-scale hydroelectric projects with wind energy representing the largest proportion of its projects.

By the nature of the community ownership of SWEB Energy, the company has extensive experience in community engagement and has worked with local stakeholder groups on projects in Nova Scotia, New Brunswick and across North America.

The Proponent



APPENDIX F

ADDITIONAL PRESENTATION MATERIALS

Welcome to the proposed White Spruce Wind Energy Project Public Engagement Session

About the Project

The White Spruce Wind Energy Project is a proposed renewable energy facility with a total capacity of 49 megawatts (MW). The project will be comprised of up to seven (7) turbines which will be interconnected to the existing New Brunswick Power electrical transmission network. If built, the facility would be located on Crown land south of the Village of Fredericton Junction, in Charlotte County, New Brunswick. The project is being developed through a partnership including one or more yet-to-be-disclosed First Nation communities and SWEB Development LP (SWEB Energy), a Halifax-based renewable energy developer and operator.



About the New Brunswick Request for Expressions of Interest (REOI)

In late 2023, NB Power released a Request for Expressions of Interest (REOI-XXXX-23-126) to initiate the procurement of new renewable energy projects. The REOI was aimed at procuring up to 200 MW of wind energy, 15 MW of solar photovoltaic projects, and 5 MW of tidal power projects. This procurement and others aim to increase the inclusion of First Nations and Indigenous communities in the energy transition, while also working to lower energy rates for ratepayers in the province. Other benefits of this program include the creation of new jobs, business opportunities, and expertise in the energy industry here in New Brunswick. SWEB and its partners have submitted this project in response to the REOI and intend to continue to submit project proposals as part of future renewable energy procurements held in the province.

Project Benefits

A central focus of the project during development, construction, and operations is to ensure that as much local labour, services, and materials are used as possible. It is anticipated that if the project is built, it will create several direct and indirect benefits for various stakeholders and First Nation



communities. The project will have a positive impact on local businesses and will result in employment opportunities in addition to tax revenue for municipal, provincial, and federal governments. Further, a share of project revenues will be used to support local community groups and underrepresented communities in the province.

Through this project, SWEB Development hopes to work with NB Power to broaden the inclusion and participation of diverse organizations in the energy sector to transition toward a net zero electricity system in 2035.

SWEB's Approach to Wind Energy

SWEB Energy is a team of renewable energy professionals who are passionate about community, the environment and shared social values. As of 2024, our team has developed, commissioned and is currently operating 68 MW of community-based wind energy projects throughout New Brunswick and Nova Scotia, which includes the Wisokolamson Energy Project, an 18 MW wind energy project located on a tract of Crown land west of the Village of Riverside-Albert, New Brunswick. All of SWEB's Canadian projects are owned in partnership with First Nation groups or local communities. SWEB is the Canadian subsidiary of W.E.B, an Austrian, community-owned energy transition company with over 30 years of experience in planning, financing, constructing and operating renewable energy projects in Austria, Germany, Italy, the Czech Republic, France, Canada, and the United States. As of 2024, W.E.B operates a total of 284 wind energy, 50 photovoltaic, and 2 small hydroelectric power plants throughout Europe and North America. Their established nominal output of 735 MW and the annual electricity production from our projects produces enough power for over 1,000,000 people annually.

SWEB Energy will continue to engage the community regarding the Project over the coming months. Our team will reach out directly to interested stakeholders and would be pleased to welcome community members at any of our upcoming engagement sessions. We also invite you to consult our Project website and social media channels for detailed information and updates; or simply give us a call!

Contact Us. Your feedback and questions are welcome!

SWEB Energy
6080 Young St, Suite 403
Halifax, NS
B3K 5L2
Canada
Local: (902) 431-0564
Toll Free: +1 (844) 468 3134


Project Contact
Jason Parisé
Development Director

Phone: +1 (902) 4310564 ext. 261
Mobile: +1 (902) 329-1494
Email: whitespruce@web.energy

Website: whitespruce.web.energy



APPENDIX G
PUBLIC COMMENTS



WEB
SWEB Development
a WEB company
sweb.energy

WSP WS

**SWEB Energy
Project Feedback Form**

Name: Jeff Carr Address: 910 Broad Road
Email: jeffcarr4nms@gmail.com Geary, NB

How did you hear about the Project?

☒ Social Media ☐ Newspaper ☐ Other
☐ Word of Mouth ☐ Flyer _____

How satisfied were you with the information presented?

☒ Very Satisfied ☐ Satisfied ☐ Neutral ☐ Dissatisfied ☐ Very Dissatisfied

How would you evaluate the staff's expertise regarding the Project?

☒ Excellent ☐ Good ☐ Average ☐ Poor ☐ Very Poor

What was your level of knowledge about wind energy before the session?

☐ Excellent ☒ Good ☐ Average ☐ Poor ☐ Very Poor

How do you feel about wind energy in general?

☒ Strongly Support ☐ Support ☐ Neutral ☐ Do Not Support ☐ Strongly Do Not Support

How do you feel about wind energy in your community?

☒ Strongly Support ☐ Support ☐ Neutral ☐ Do Not Support ☐ Strongly Do Not Support

Would you like to stay up to date on Project developments?

☒ Yes ☐ No

Please let us know if you have any feedback about the Project, or expand on your answers above:

Thank you for taking the time to complete our feedback form



SWEB Development
a W.E.B. company
sweb.energy

MS

SWEB Energy Project Feedback Form

Name: Louis M. Whiting Address: Fredrickton NB
Email: _____

How did you hear about the Project?

- ☒ Social Media ☐ Newspaper ☐ Other
☐ Word of Mouth ☐ Flyer _____

How satisfied were you with the information presented?

- ☐ Very Satisfied ☒ Satisfied ☐ Neutral ☐ Dissatisfied ☐ Very Dissatisfied

How would you evaluate the staff's expertise regarding the Project?

- ☒ Excellent ☐ Good ☐ Average ☐ Poor ☐ Very Poor

What was your level of knowledge about wind energy before the session?

- ☐ Excellent ☒ Good ☐ Average ☐ Poor ☐ Very Poor

How do you feel about wind energy in general?

- ☒ Strongly Support ☐ Support ☐ Neutral ☐ Do Not Support ☐ Strongly Do Not Support

How do you feel about wind energy in your community?

- ☒ Strongly Support ☐ Support ☐ Neutral ☐ Do Not Support ☐ Strongly Do Not Support

Would you like to stay up to date on Project developments?

- ☒ Yes ☐ No

Please let us know if you have any feedback about the Project, or expand on your answers above:

Thank you for taking the time to complete our feedback form



SWEB Development
a W.E.B. company
swab.energy

WS

SWEB Energy Project Feedback Form

Name: Jasmin Khawar

Address: 90 Woodbury Lane

Email: _____

Scituate, MA 01908

How did you hear about the Project?

- ☒ Social Media ☐ Newspaper ☐ Other
☐ Word of Mouth ☐ Flyer _____

How satisfied were you with the information presented?

- ☐ Very Satisfied ☒ Satisfied ☐ Neutral ☐ Dissatisfied ☐ Very Dissatisfied

How would you evaluate the staff's expertise regarding the Project?

- ☒ Excellent ☐ Good ☐ Average ☐ Poor ☐ Very Poor

What was your level of knowledge about wind energy before the session?

- ☒ Excellent ☐ Good ☐ Average ☐ Poor ☐ Very Poor

How do you feel about wind energy in general?

- ☒ Strongly Support ☐ Support ☐ Neutral ☐ Do Not Support ☐ Strongly Do Not Support

How do you feel about wind energy in your community?

- ☒ Strongly Support ☐ Support ☐ Neutral ☐ Do Not Support ☐ Strongly Do Not Support

Would you like to stay up to date on Project developments?

- ☒ Yes ☐ No

Please let us know if you have any feedback about the Project, or expand on your answers above:

Thank you for taking the time to complete our feedback form



SWEB Development
a W.E.B. company
sw eb.energy

WS

SWEB Energy Project Feedback Form

Name: _____ Address: _____

Email: _____

How did you hear about the Project?

- ☒ Social Media ☐ Newspaper ☐ Other
☒ Word of Mouth ☐ Flyer _____

How satisfied were you with the information presented?

- ☒ Very Satisfied ☐ Satisfied ☐ Neutral ☐ Dissatisfied ☐ Very Dissatisfied

How would you evaluate the staff's expertise regarding the Project?

- ☒ Excellent ☐ Good ☐ Average ☐ Poor ☐ Very Poor

What was your level of knowledge about wind energy before the session?

- ☐ Excellent ☒ Good ☐ Average ☐ Poor ☐ Very Poor

How do you feel about wind energy in general?

- ☒ Strongly Support ☐ Support ☐ Neutral ☐ Do Not Support ☐ Strongly Do Not Support

How do you feel about wind energy in your community?

- ☒ Strongly Support ☐ Support ☐ Neutral ☐ Do Not Support ☐ Strongly Do Not Support

Would you like to stay up to date on Project developments?

- ☒ Yes ☐ No

Please let us know if you have any feedback about the Project, or expand on your answers above:

Thank you for taking the time to complete our feedback form



SWEB Development
a W.E.B. company
sweb.energy

WS

SWEB Energy Project Feedback Form

Name: Eric Ouellette Address: Grand Falls
Email: eric.ouellette@gemtec.ca

How did you hear about the Project?

- ☐ Social Media ☐ Newspaper ☐ Other
☒ Word of Mouth ☐ Flyer

How satisfied were you with the information presented?

- ☐ Very Satisfied ☒ Satisfied ☐ Neutral ☐ Dissatisfied ☐ Very Dissatisfied

How would you evaluate the staff's expertise regarding the Project?

- ☐ Excellent ☒ Good ☐ Average ☐ Poor ☐ Very Poor

What was your level of knowledge about wind energy before the session?

- ☒ Excellent ☐ Good ☐ Average ☐ Poor ☐ Very Poor

How do you feel about wind energy in general?

- ☒ Strongly Support ☐ Support ☐ Neutral ☐ Do Not Support ☐ Strongly Do Not Support

How do you feel about wind energy in your community?

- ☐ Strongly Support ☒ Support ☐ Neutral ☐ Do Not Support ☐ Strongly Do Not Support

Would you like to stay up to date on Project developments?

- ☒ Yes ☐ No

Please let us know if you have any feedback about the Project, or expand on your answers above:

Thank you for taking the time to complete our feedback form



SWEB Development
a W.E.B. company
sw eb.energy

WS

SWEB Energy Project Feedback Form

Name: Jim Jones Address: 280 Post Rd
Email: Jones, Jim S @ Jones, G.C. CA

How did you hear about the Project?

- ☒ Social Media ☐ Newspaper ☐ Other
☐ Word of Mouth ☐ Flyer _____

How satisfied were you with the information presented?

- ☐ Very Satisfied ☒ Satisfied ☐ Neutral ☐ Dissatisfied ☐ Very Dissatisfied

How would you evaluate the staff's expertise regarding the Project?

- ☐ Excellent ☒ Good ☐ Average ☐ Poor ☐ Very Poor

What was your level of knowledge about wind energy before the session?

- ☐ Excellent ☐ Good ☐ Average ☒ Poor ☐ Very Poor

How do you feel about wind energy in general?

- ☒ Strongly Support ☐ Support ☐ Neutral ☐ Do Not Support ☐ Strongly Do Not Support

How do you feel about wind energy in your community?

- ☐ Strongly Support ☒ Support ☐ Neutral ☐ Do Not Support ☐ Strongly Do Not Support

Would you like to stay up to date on Project developments?

- ☒ Yes ☐ No

Please let us know if you have any feedback about the Project, or expand on your answers above:

Thank you for taking the time to complete our feedback form



SWEB Development
a W.E.B. company
swab.energy

WS

SWEB Energy Project Feedback Form

Name: _____ Address: _____

Email: _____

How did you hear about the Project?

- ☒ Social Media ☐ Newspaper ☐ Other
☐ Word of Mouth ☐ Flyer _____

How satisfied were you with the information presented?

- ☒ Very Satisfied ☐ Satisfied ☐ Neutral ☐ Dissatisfied ☐ Very Dissatisfied

How would you evaluate the staff's expertise regarding the Project?

- ☒ Excellent ☐ Good ☐ Average ☐ Poor ☐ Very Poor

What was your level of knowledge about wind energy before the session?

- ☐ Excellent ☒ Good ☐ Average ☐ Poor ☐ Very Poor

How do you feel about wind energy in general?

- ☒ Strongly Support ☐ Support ☐ Neutral ☐ Do Not Support ☐ Strongly Do Not Support

How do you feel about wind energy in your community?

- ☒ Strongly Support ☐ Support ☐ Neutral ☐ Do Not Support ☐ Strongly Do Not Support

Would you like to stay up to date on Project developments?

- ☒ Yes ☐ No

Please let us know if you have any feedback about the Project, or expand on your answers above:

Thank you for taking the time to complete our feedback form



SWEB Development
a W.E.B. company
sweb.energy

WS

SWEB Energy Project Feedback Form

Name: Don McDonald Address: _____

Email: _____

How did you hear about the Project?

☒ Social Media

☐ Newspaper

☒ Other

☐ Word of Mouth

☐ Flyer

Work

How satisfied were you with the information presented?

☐ Very Satisfied

☒ Satisfied

☐ Neutral

☐ Dissatisfied

☐ Very Dissatisfied

How would you evaluate the staff's expertise regarding the Project?

☐ Excellent

☒ Good

☐ Average

☐ Poor

☐ Very Poor

What was your level of knowledge about wind energy before the session?

☐ Excellent

☐ Good

☐ Average

☒ Poor

☐ Very Poor

How do you feel about wind energy in general?

☐ Strongly Support

☒ Support

☐ Neutral

☐ Do Not Support

☐ Strongly Do Not Support

How do you feel about wind energy in your community?

☐ Strongly Support

☒ Support

☐ Neutral

☐ Do Not Support

☐ Strongly Do Not Support

Would you like to stay up to date on Project developments?

☐ Yes

☒ No

Please let us know if you have any feedback about the Project, or expand on your answers above:

Thank you for taking the time to complete our feedback form

APPENDIX H

FACEBOOK COMMENTS

Community Engagement Session Advertisement

Steven Carson

This one is fairly close to the one they are also going to put up just west of McAdam .

SWEB: Hi Steven, thanks for your comment. We do have another proposed project northeast of McAdam, NB called Mountain Ash. Here's the website if you're looking for more information: mountainash.sweb.energy

Gary Falenda

Tear down forests to put up solar farms not a great idea I've told politicians and businesses for years best place to put solar panels, not to take up land is on the roof of every house in Canada but then that takes the control out of company and governments hands so they can charge us and make money.

SWEB: Hi Gary, Thank you for sharing your concerns; we'd love the opportunity to address them further. Please be aware that this is a wind energy project, not a solar farm. Solar energy is unavailable at night and generates less power during the winter—precisely when electricity demand in New Brunswick is at its highest. And that is exactly when wind energy produces typically the most. Please feel free to email us at whitespruce@sweb.energy or join us at our engagement session on November 19th.

Michael Shawn Dempsey

Gary Falenda It's windmills not solar on this project

JoJo Smiley

Who's getting the energy and at what cost is it going to be to the citizens of NB .. and is it really a sustainable energy source? Will it create power consistently?

SWEB: Hi JoJo, If built, this project would provide electricity to homes and businesses in New Brunswick exclusively. The cost to New Brunswickers for this energy would be significantly lower than the average cost for the current sources of electricity, and it would contribute to stabilizing the electricity rates. Compared to other sources of energy, wind energy is undoubtedly one of the most sustainable energy sources available to date. Wind energy will never be the only solution to meet the electricity demand. That is why utilities all over the world have identified a diverse energy mix as the most efficient and cost-effective way to meet the electricity demand. We'd love to chat more about these topics

with you. Please feel free to email us at whitespruce@sweb.energy or join us at our engagement session on November 19th.

Michael Shawn Dempsey

Not a good idea

SWEB: Hi Michael, thank you for sharing your concerns; we'd love the opportunity to address them further. Please feel free to email us at whitespruce@sweb.energy or join us at our engagement session on November 19th.

Sebastianski Terrarock

This is worrisky! Don't do it NB!

Community Engagement Session Post

Randy Mersereau

We're going to destroy the landscape, birds and wildlife, not to mention the environmental impact to supply power to 10 to 210 homes depending on how much the wind blows.

How many tax payer dollars will be spent?

These huge windmills have got to be the most disgusting site there is on a wilderness landscape.

How much will NBP (taxpayers) pay the developer per KWH?

I believe it would be much less expensive on taxpayers if up to 210 homes in the area had a big savings to install solar on their property to sell to NBP.

I'm not against green energy projects but 200 + meter high windmills on top of the beautiful hills between K10 and Hoyt, that all the campers at South Oromocto lake and others lakes in the area can watch while they're enjoying their weekend getaway...not my idea of pretty!