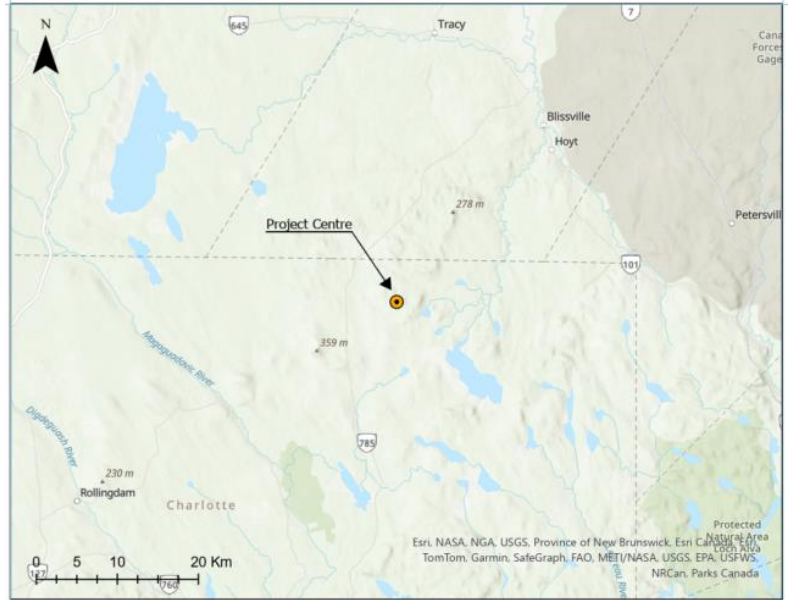


Welcome to the proposed White Spruce Wind Energy Project Public Engagement Session

About the Project

The White Spruce Wind Energy Project is a proposed renewable energy facility with a total capacity of 49 megawatts (MW). The project will be comprised of up to seven (7) turbines which will be interconnected to the existing New Brunswick Power electrical transmission network. If built, the facility would be located on Crown land south of the Village of Fredericton Junction, in Charlotte County, New Brunswick. The project is being developed through a partnership between Nikutik Limited Partnership, Sovereign Wealth Fund founded by the North Shore Mi'kmaq Tribal Council and its seven Member Nations, Woodstock First Nation and SWEB Development LP (SWEB Energy), a Halifax-based renewable energy developer and operator.



About the New Brunswick Request for Expressions of Interest (REOI)

In late 2023, NB Power released a Request for Expressions of Interest (REOI-XXXX-23-126) to initiate the procurement of new renewable energy projects. The REOI was aimed at procuring up to 200 MW of wind energy, 15 MW of solar photovoltaic projects, and 5 MW of tidal power projects. This procurement and others aim to increase the inclusion of First Nations and Indigenous communities in the energy transition, while also working to lower energy rates for ratepayers in the province. Other benefits of this program include the creation of new jobs, business opportunities, and expertise in the energy industry here in New Brunswick. SWEB and its partners have submitted this project in response to the REOI and intend to continue to submit project proposals as part of future renewable energy procurements held in the province.

Project Benefits

A central focus of the project during development, construction, and operations is to ensure that as much local labour, services, and materials are used as possible. It is anticipated that if the project is

built, it will create several direct and indirect benefits for various stakeholders and First Nation communities. The project will have a positive impact on local businesses and will result in employment opportunities in addition to tax revenue for municipal, provincial, and federal governments. Further, a share of project revenues will be used to support local community groups and underrepresented communities in the province.

Through this project, SWEB Development hopes to work with NB Power to broaden the inclusion and participation of diverse organizations in the energy sector to transition toward a net zero electricity system in 2035.

SWEB's Approach to Wind Energy

SWEB Energy is a team of renewable energy professionals who are passionate about community, the environment and shared social values. As of 2024, our team has developed, commissioned and is currently operating 68 MW of community-based wind energy projects throughout New Brunswick and Nova Scotia, which includes the Wisokolamson Energy Project, an 18 MW wind energy project located on a tract of Crown land west of the Village of Riverside-Albert, New Brunswick. All of SWEB's Canadian projects are owned in partnership with First Nation groups or local communities. SWEB is the Canadian subsidiary of W.E.B, an Austrian, community-owned energy transition company with over 30 years of experience in planning, financing, constructing and operating renewable energy projects.

SWEB Energy will continue to engage the community regarding the Project over the coming months. Our team will reach out directly to interested stakeholders and would be pleased to welcome community members at any of our upcoming engagement sessions. We also invite you to consult our Project website and social media channels for detailed information and updates; or simply give us a call!

Contact Us. Your feedback and questions are welcome!

SWEB Energy

6080 Young St, Suite 403
Halifax, NS
B3K 5L2
Canada
Local: (902) 431-0564
Toll Free: +1 (844) 468 3134

Project Contact

Jason Parisé
Director of Development – Wind Lead

Phone: +1 (902) 4310564 ext. 261
Mobile: +1 (902) 329-1494
Project Email: whitespruce@sweb.energy

Project Website: whitespruce.sweb.energy

